

OUTDOOR PRODUCTS RANGE



Freestanding Litter Bins

We have a huge selection of bins for every location. If you are looking for bins for outdoor use in Ireland we would recommend the Heavy Duty 100L Litter Bin. This bin has been made to withstand the cold and harsh weather and is made with Pre-coated Steel. The Serious bin has been designed with a modern look and it's 304 Grade Stainless Steel makes it durable and long lasting. If you are looking for a bin for a public space such as a park the HD120 Litter Bin 120L would suit that environment. It is a large bin that is available in a variety of colours and finishes.

HD100



PRODUCT CODE

6410

DIMENSIONS

HEIGHT: 980 mm
WIDTH: 480 mm
DEPTH: 480 mm
VOLUME: 100L

HD120



PRODUCT CODE

6400

DIMENSIONS

HEIGHT: 980 mm
WIDTH: 530 mm
DEPTH: 530 mm
VOLUME: 120L

COUNCIL FLAT



PRODUCT CODE

6050

DIMENSIONS

HEIGHT: 980 mm
WIDTH: 400 mm
DEPTH: 460 mm
VOLUME: 90L

OUTDOOR
BINS

**FREESTANDING
LITTER
BINS**

PYRAMID TOP STREET BIN 50L



PRODUCT CODE

6250S

DIMENSIONS

HEIGHT: 1100 mm
WIDTH: 330 mm
DEPTH: 330 mm
VOLUME: 80L

PYRAMID TOP STREET BIN 50L



PRODUCT CODE

6108S

DIMENSIONS

HEIGHT: 1000 mm
WIDTH: 350 mm
DEPTH: 350 mm
VOLUME: 50L

FLAT TOP LITTER BIN 80L



PRODUCT CODE

6020

DIMENSIONS

HEIGHT: 900 mm
WIDTH: 450 mm
DEPTH: 400 mm
VOLUME: 80L

FLAT TOP LITTER BIN 100L



PRODUCT CODE

6021

DIMENSIONS

HEIGHT: 950 mm
WIDTH: 500 mm
DEPTH: 500 mm
VOLUME: 100L

**OUTDOOR
BINS**

**FREESTANDING
LITTER
BINS**

APEX TOP LITTER BIN 80L



PRODUCT CODE

6040

DIMENSIONS

HEIGHT: 900 mm
WIDTH: 397 mm
DEPTH: 397 mm
VOLUME: 80L

- Zinc coated mild steel
- Powder Coated in Epoxy Polyester
- Large or Restricted openings available
- Heavy Duty Tri-Insert Locking System
- Galvanised Liner included
- Handles fitted to Liner
- Heavy Duty Door Hinge
- Stubbing Plate included
- Internal Ashtray available
- Labelling included as Standard

DOME TOP LITTER BIN 120L



PRODUCT CODE

6445

DIMENSIONS

HEIGHT: 1140 mm
WIDTH: 400 mm
DEPTH: 400 mm
VOLUME: 120L

- Zinc coated mild steel
- Powder Coated in Epoxy Polyester
- 2 X 150mm Diameter Openings
- Fitted with Heavy Duty Proof Slam
- Close Lock
- Galvanised Liner included
- Handles fitted to Liner
- Stubbing Plate included
- Internal Ashtray available
- Labelling included as Standard

ROUND WALL/POLE LITTER BIN



PRODUCT CODE

6065

DIMENSIONS

HEIGHT: mm
DIAMETER: 330 mm
VOLUME: 50L

- 2mm Galvanised Pre-coated Steel
- Powder Coated in Epoxy Polyester
- Available with Pole if Required
- Wall or Pole Mountable

OUTDOOR BINS

FREESTANDING LITTER BINS

ROUND WALL/POLE LITTER BIN



PRODUCT CODE

6064

DIMENSIONS

HEIGHT: 1100 mm
DIAMETER: 325 mm
VOLUME: 50L

- 2mm Galvanised Pre-coated Steel
- Powder Coated in Epoxy Polyester
- Available with Pole if Required
- Wall or Pole Mountable
- All Finishes & Colours available
- Galvanised Liner included
- Liner is lockable if required

Available in Stainless or Powder Coated Steel

1XTHROW IN OPENING OUTSIDE BIN



PRODUCT CODE

5039

DIMENSIONS

HEIGHT: 755 mm
DIAMETER: 400 mm
VOLUME: 33L

- A compact range of outdoor bins
- All fitted with galvanised liner
- Wood effect Powder Coated steel strips
- The 69 Litre bin is made from black powder coated steel and is heavy duty and durable
- Aintwood sourround
- Black metal lid
- Comes with or without ashtray

DOME TOP LITTER BIN 120L



PRODUCT CODE

5038

DIMENSIONS

HEIGHT: 755 mm
DIAMETER: 400 mm
VOLUME: 40L

- A compact range of outdoor bins
- All fitted with galvanised liner
- Wood effect Powder Coated steel strips
- The 69 Litre bin is made from black powder coated steel and is heavy duty and durable
- Aintwood sourround
- Black metal lid
- Comes with or without ashtray

ROUND PLASTIC LITTER BIN



PRODUCT CODE

6510

DIMENSIONS

HEIGHT: 1040 mm
DIAMETER: 520 mm
VOLUME: 95L

- Manufactured from polyethylene
- Complete with galvanized liner
- Easy to use locking system as standard
- Full Banding, Lettering & Logo options available
- Removable lockable top gains entry for simple litter removal
- Full Banding, Lettering & Logo options available

OUTDOOR BINS

FREESTANDING LITTER BINS

BOYNE 100L



PRODUCT CODE

BOYNE 100

DIMENSIONS

HEIGHT: 1100 mm

DIAMETER: 325 mm

VOLUME: 50L

- 100 litre plastic hooded street litter bin with galvanised liner
- Black, Blue, Green, Red colour available



SLANEY PLASTIC BIN



PRODUCT CODE

6903A

DIMENSIONS

HEIGHT: 1060 mm

WIDTH: 470 mm

DEPTH: 470 mm

VOLUME: 140L

- The covered dome lid deters rubbish from being placed on the top
- Ground fixing bolts to secure the bin to the ground and a lid base a cable to keep two together are available



NORE PLASTIC BIN



PRODUCT CODE

6903B

DIMENSIONS

HEIGHT: 875 mm

WIDTH: 470 mm

DEPTH: 470 mm

VOLUME: 140L

- Colours : Black, Grey, Green, Blue
- Patented Grab-bag system
- Made from impact plastic

BARROW OUTDOOR BIN



PRODUCT CODE

6903C

DIMENSIONS

HEIGHT: 1070 mm

WIDTH: 470 mm

DEPTH: 470 mm

VOLUME: 140L

- The covered dome lid deters rubbish from being placed on the top
- Ground fixing bolts to secure the bin to the ground and a lid base a cable to keep two together are available

OUTDOOR BINS

FREESTANDING LITTER BINS

AJAX OUTDOOR BIN



PRODUCT CODE

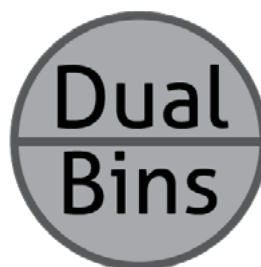
6041

DIMENSIONS

HEIGHT: 1000 mm

DIAMETER: 400 mm

VOLUME: 2X50L



ACHILLES OUTDOOR BIN



PRODUCT CODE

6042

DIMENSIONS

HEIGHT: 1000 mm

DIAMETER: 400 mm

VOLUME: 2X50L

- Hooded two compartment steel outdoor bin
- Silver epoxy powder coated.
- Supplied with Recycling graphics
- "Mixed Recycling" and "General Waste"
- Lockable
- 2 x 39 litre plastic liners
- Ground fixing bolts available

Wall/Pole Litter Bins

Our litter bins can be wall-mounted or pole-fitted to suit the school environment, public parks, college campuses or any public area. With our litter bins we provide the perfect waste disposal unit for rubbish, dog waste or recycled materials.

Our wall and pole mounted litter bins are manufactured from steel for durability and come with a heavy duty locking system for security and longevity. We offer a variety of litter bin sizes and designs giving you options to meet your needs. Our range of wall-mounted and pole-fitted litter bins include heavy duty litter bins, round litter bin, and dog waste litter bins. With such variety and options available, our litter bins are the perfect tool for waste disposal in any public setting.

DOG WASTE LITTER BIN



PRODUCT CODE

6425R

DIMENSIONS

HEIGHT: 715 mm
WIDTH: 345 mm
DEPTH: 345mm
VOLUME: 50L



- 2mm Galvanised Pre-coated Steel
- Powder Coated in Epoxy Polyester
- Available with or without Pole
- Wall or Pole Mountable
- All Finishes & Colours available
- Special Lift Up Lid with Shelf Design
- Fitted with Heavy Duty Tri-Insert Lock
- Galvanised Liner included
- Handles fitted to Liner
- Stainless Piano Heavy Duty Door Hinge
- Screening/Labelling included as Standard
- Glove or Bag Holder Combination Unit available
- Text cut out with Gold backing, all Logos,
- Colours available

OUTDOOR
BINS

Wall/Pole Litter Bins

OUTDOOR BIKE STORAGE

Paragon Products supply bicycle racks for outdoor areas in Ireland like schools, office and retail buildings and public spaces. Paragon Products have been supplying outdoor street furnishings like bike stands in Ireland for nearly 30 years. All products are manufactured from our Taltech Engineering facilities here in Dublin using the highest quality industry products and environmentally friendly production methods.



BICYCLE RACK

PRODUCT CODE

7000

- Manufactured in Steel
- Hot Dipped Galvanised Protective Coating
- Modular System - more can be added
- Ground Fixing holes pre-drilled

BICYCLE STANDS

OUTDOOR
BINS



Caters for all makes & models of bicycles

Bollards Range

There are so many types, makes and models of bollards available today that it can be hard to choose which bollard is right for your application.

If you are managing traffic control in busy urban centres like shopping malls, high streets or CBDs you'll understand how important these short vertical posts are to maintaining smooth traffic flow, protecting pedestrians and keeping order in your streets and other public spaces. You'll also probably be familiar with the huge range of choices that are available to you from bollard manufacturers around Ireland.

How do you know which type of bollard is the right one to choose? Let's look briefly at the various kinds of bollards that are available on the market.

Permanent traffic bollards – These are intended to stop motorists from entering pedestrianised zones but still may be wide enough to allow special purpose vehicles to pass through. They can be used to delineate no parking areas or to control overspill parking on sidewalks and verges.

Illuminated traffic bollards – Internally illuminated bollards can be found on traffic islands where road hazard and warning signs are used to instruct drivers.

Traffic calming bollards – Slim bollards along road sides are used for traffic calming in built up areas. These kinds of bollards limit the size and movement of vehicles and the number of vehicles on the road and can also control traffic speed.

Movable and removable bollards – Temporary bollard structures can be moved and removed depending on the need. These types of bollards are suited to areas that need a more flexible approach to traffic flow, such as streets that become pedestrian-only zones on weekends but need to allow traffic at other times.

Security and protection bollards – Bollards can be used to protect pedestrians from vehicles. In busy shopping precincts bollards prevent traffic accidents from becoming much

**OUTDOOR
BINS**

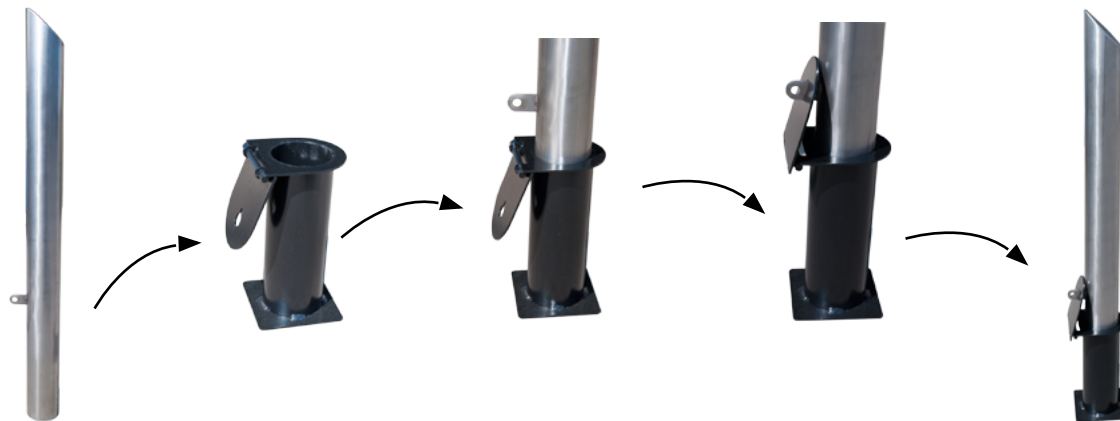
**BOLLARDS
RANGE**

more devastating by protecting passers by from becoming involved in the collision. Bollards can also be used to protect store fronts from traffic accidents or 'smash and grab' ram-Security and protection bollards – Bollards can be used to protect pedestrians from vehicles. In busy shopping precincts bollards prevent traffic accidents from becoming much more devastating by protecting passers by from becoming involved in the collision. Bollards can also be used to protect store fronts from traffic accidents or 'smash and grab' ram-raid attacks.

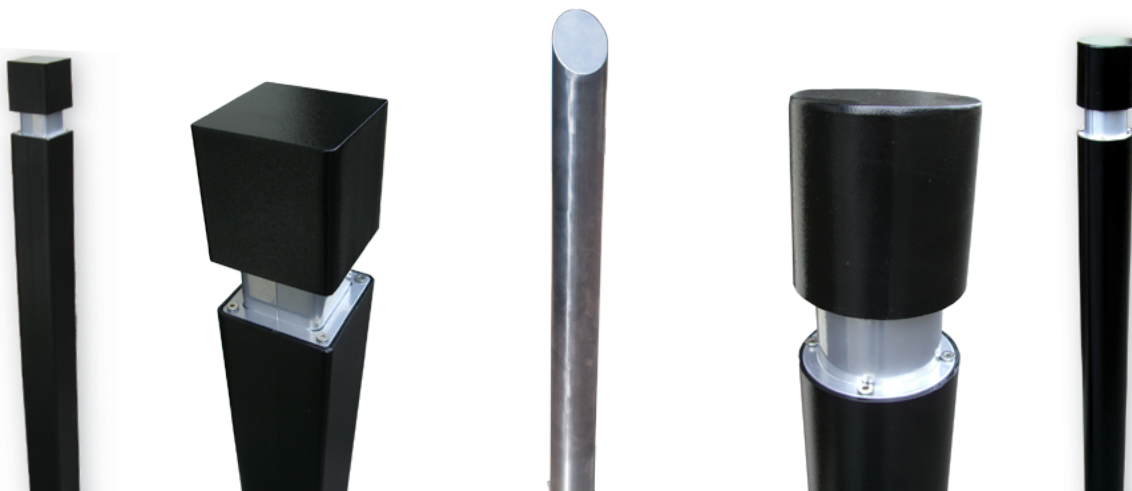
Paragon Products is a leading supplier of bollards in Ireland.

**OUTDOOR
BINS**

BOLLARDS RANGE



- Available in Stainless Steel
- Available in Powder coated Steel
- All Finishes & Colours available
- Flat, Curved or Rounded Top
- Lockable Ground Retention Socket Available
- Multiple Bollard Sizes available
- External Baseplate also Available



CARDBOARD RECYCLE UNIT



PRODUCT CODE

6602

DIMENSIONS

HEIGHT: 760 mm

WIDTH: 310 mm

DEPTH: 315 mm

- manufactured from zintec-coated steel
- Powder Coated in epoxy polyester
- non-standard label design service included
- suitable for both indoor & Outdoor

4 WAY RECYCLING UNIT



PRODUCT CODE

6603

DIMENSIONS

HEIGHT: 1090 mm

WIDTH: 1360 mm

DEPTH: 510 mm

- Manufactured from Zintec Coated Steel
- Powder Coated in Epoxy Polyester
- Lift up Lids or Colour Coded Rings available
- Fitted with Heavy Duty Locking System
- Galvanised Liner included
- Handles fitted to Liner
- Labelling included as Standard

4 WAY RECYCLING UNIT + SINK UNIT



PRODUCT CODE

6600

DIMENSIONS

HEIGHT: 1090 mm

WIDTH: 1110 mm

DEPTH: 510 mm

VOLUME: 100L

- Manufactured from Zintec Coated Steel
- Powder Coated in Epoxy Polyester
- 4 Separate Openings for Segregation of Waste
- Fitted with Heavy Duty Locking System
- Galvanised Liners included
- Handles fitted to Liner
- Stock Labelling included as Standard
- Suitable for both Indoor & Outdoor areas
- Also in double and treble unit
- Stainless steel model available
- Available with Sink Unit

**OUTDOOR
BINS**

**OUTDOOR
RECYCLING
STATION**



TRADITIONAL FREES TARNDING ASH BIN

PRODUCT CODE

6070

DIMENSIONS

HEIGHT: 1000 mm
WIDTH: 200 mm
DEPTH: 200 mm

- Zintec Pre-Coated Steel Body
- Powder Coated in Epoxy Polyester
- Fully Stainless Steel Unit also Available/
- Free standing Unit
- Holes in Base for Ground Fixing
- External Baseplate also Available
- Internal Galvanised Liner
- Locking System with Tri-insert key



TAPERED FREE STANDING ASH BIN

PRODUCT CODE

6071

DIMENSIONS

HEIGHT: 1000 mm
WIDTH: 200 mm
DEPTH: 150 mm

- Zintec Pre-Coated Steel Body Powder Coated in Epoxy Polyester
- Stainless Subbing Plate
- Fully Stainless Steel Unit also Available
- Free standing Unit
- Holes in Base for Ground Fixing
- Internal Galvanised Liner included
- Locking System with Tri-insert Key
- Pivoted Drop Down Front for emptying
- Fire Retardant



PYRAMID FREESTANDING ASHBIN

PRODUCT CODE

6061

DIMENSIONS

HEIGHT: 1000 mm
WIDTH: 200 mm
DEPTH: 200 mm

- Zintec Pre-Coated Steel Body
- Powder Coated in Epoxy / Polyester Stainless Steel
- Fully Stainless Steel Unit also Available
- Holes in Base for Ground Fixing
- Internal Galvanised Liner include
- Locking System with Tri-insert Key
- Fire Retardant

**OUTDOOR
BINS**

**ASH BINS
& TRAYS**

SMOKE BUSTER ASH BIN - WALL MOUNTED



PRODUCT CODE

6063

DIMENSIONS

HEIGHT: 335 mm

WIDTH: 220 mm

DEPTH: 100 mm

- Available in Galvanised Pre-coated Steel
- Powder Coated in Epoxy Polyester
- All Finishes & Colours available
- Stainless Steel Unit also Available
- Wall Mountable - Fixings Included
- Internal Galvanised Liner included
- Cam locking System with Key
- Pivoted Drop Down Front for emptying
- Fire Retardant

CURVED ASH BIN- WALL MOUNTED



PRODUCT CODE

6066

DIMENSIONS

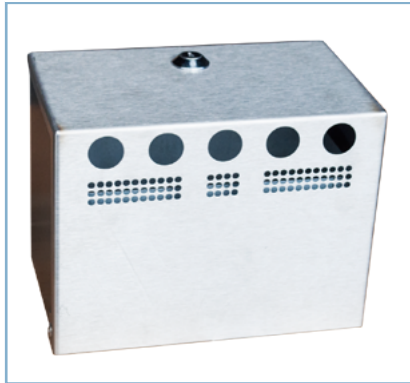
HEIGHT: 240 mm

WIDTH: 160 mm

DEPTH: 120 mm

- Zintec Pre-Coated Steel Body
- Powder Coated in Epoxy Polyester
- All Finishes & Colours available
- Stainless Steel Front Brushed Finish
- Fully stainless Steel Unit also Available
- Wall Mountable - Fixings Included
- Internal Galvanised Liner included
- Locking System with Allen Key
- Pivoted Drop Down Front for emptying

THE ASHBOX - WALL MOUNTED



PRODUCT CODE

6059

DIMENSIONS

HEIGHT: 150 mm

WIDTH: 200 mm

DEPTH: 120 mm

- Manufactured from Zintec
- Stainless Steel Top/Front
- All Finishes & Colours available
- Wall Mountable - Fixings Included
- Internal Galvanised Liner included
- Camlocking System with Key

HEAVY DUTY ASH BIN - WALL MOUNTED



PRODUCT CODE

6068

DIMENSIONS

HEIGHT: 350 mm

WIDTH: 255 mm

DEPTH: 105 mm

- Heavy Duty Unit, Available in Galvanised
- Pre-coated Steel
- Powder Coated in Epoxy Polyester
- Wall Mountable - Fixings Included
- Internal Galvanised Liner included
- Tri-insert Heavy Duty Locking System with Key
- Pivoted Drop Down Front for emptying
- Fire Retardant

OUTDOOR BINS

ASH BINS & TRAYS





Full Range of Products
[Product Catalogue 2016](#)



More information on e-mail
sales@paragonproducts.ie

or Website
www.paragonproducts.ie